

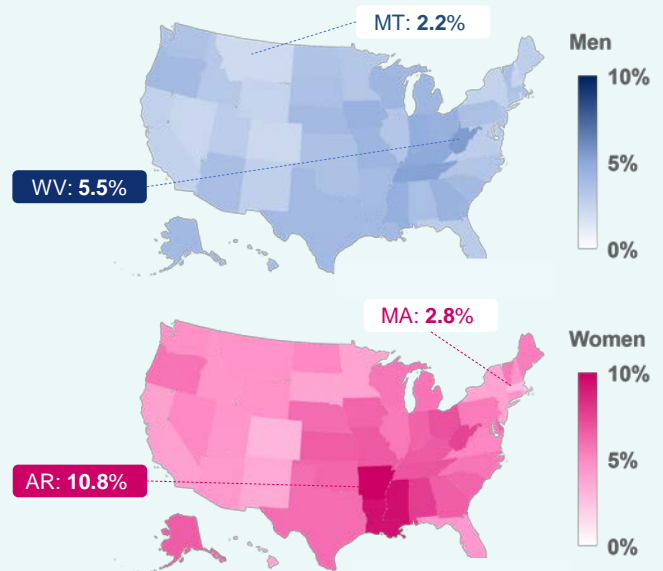
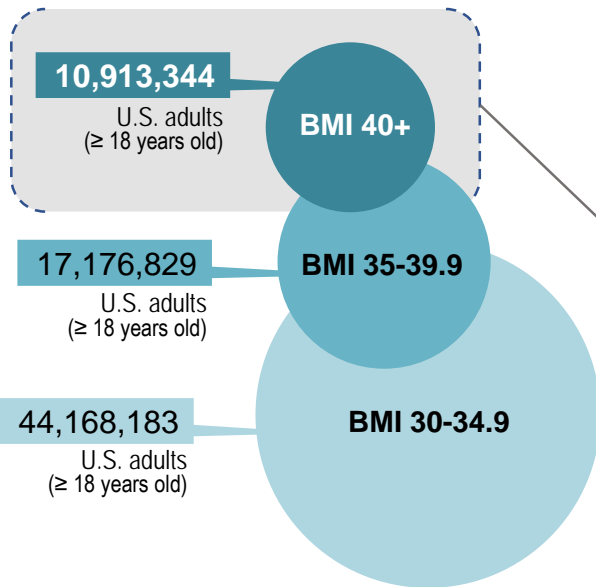


TREATMENT PROVIDERS for SEVERE OBESITY

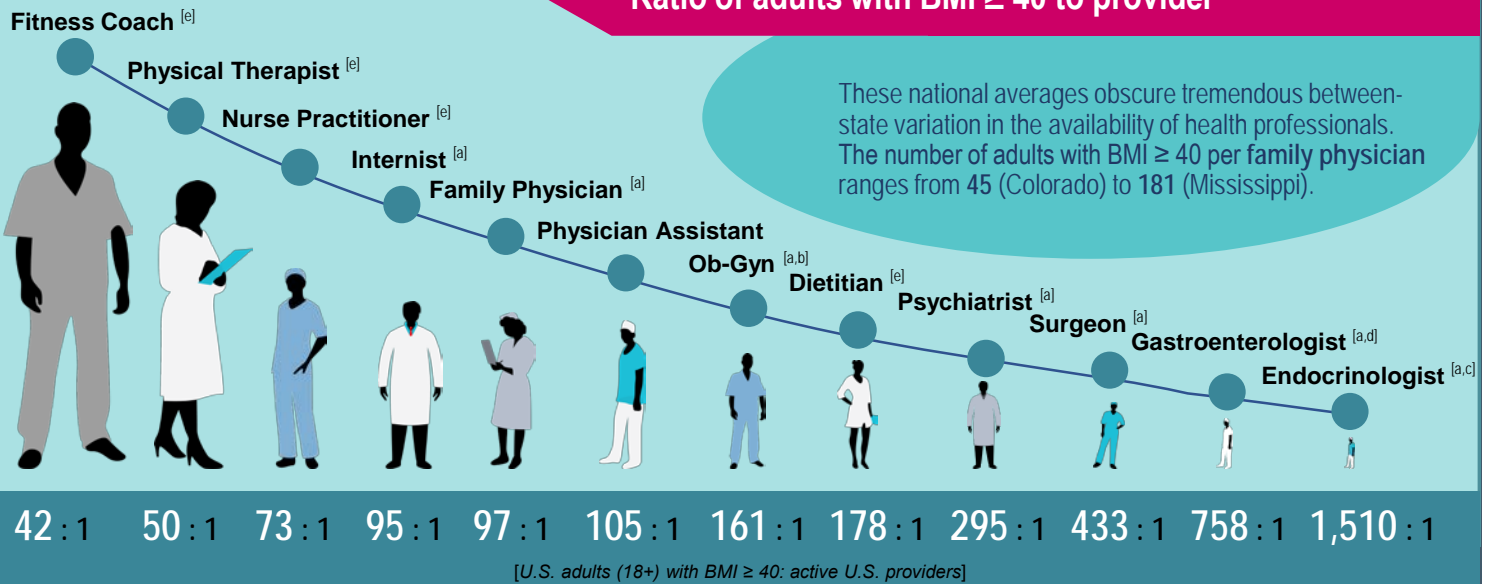
It Takes a Village: Promote Provider Training & Collaboration to Improve Access

Self-reported prevalence of severe obesity

Percentage of adults (18+ years) reporting BMI ≥ 40 kg/m², by state and gender *



Ratio of adults with BMI ≥ 40 to provider



* Prevalence of severe obesity estimated using 2016 data from Behavioral Risk Factor Surveillance System (adults aged 18+, 2016); calculations included unadjusted self-report data that likely underestimates the actual prevalence of severe obesity due to overestimation of height / underestimation of bodyweight

[a] Data from American Medical Association active physician Masterfile (2016); licensed MDs/DOs only [b] Adult females only included in per-provider calculations for ob-gyns [c] Missing counts from AK, NE, WY for endocrinologists [d] Missing counts from WY for gastroenterologists [e] Data from Bureau of Labor Statistics, Occupational Employment Statistics Survey (May 2016); self-employed persons not included in survey



A product of the Strategies to Overcome & Prevent (STOP) Obesity Alliance at the Sumner M. Redstone Global Center for Prevention & Wellness

Connect with us: obesity@gwu.edu
stopobesity.org | go.gwu.edu/RedstoneCenter
@STOPobesity | @RedstoneGWSPH

